

Studio Tecnico
Geom. STOCCHINO LUIGI
P.I. 02229980921 e.C. STCLGU65L03B354P

COMUNE DI SINNAI

Stralcio PUC



COMUNE DI **SINNAI**

PROVINCIA DI **CAGLIARI**

PROGETTO: PER LA REALIZZAZIONE DI UN
DEPOSITO DA KG.27000 DI GPL IN BOMBOLE

COMMITTENTE: **OLTREGAS** DI SERGIO PUSCEDDU
LOCALITA' "MARGINI BIANCU" - SINNAI -

TAV. N°

2

**ELABORATI
GRAFICI**

DATA

SCALA 1.2000
1.200
1.50

ALCANTARA
131351P

COMUNE DI SINNAI

Stralcio PUC

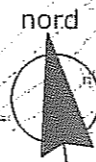


ARI

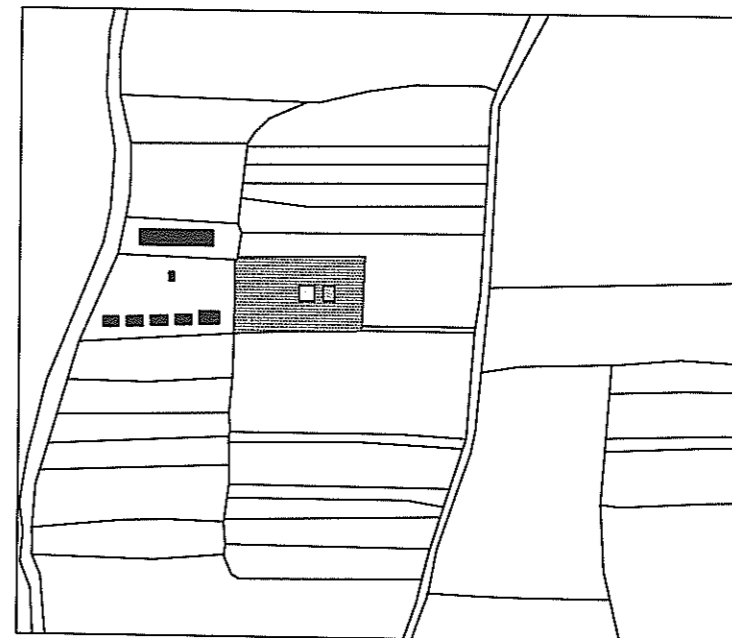
DI UN
BOLE

ing. Lottardi & C.

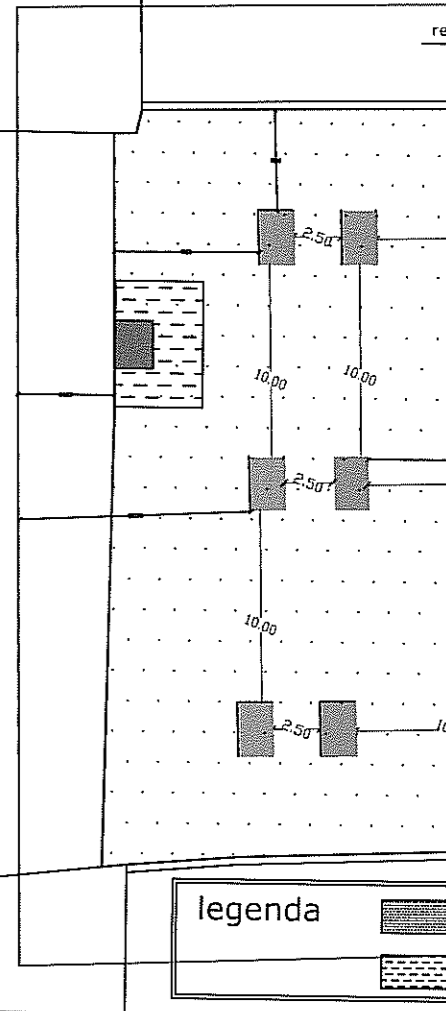
COMUNE DI SINNAI PLANIMETRIA CATASTALE Stralcio foglio 46



PLANIMETRIA GENERALE SCALA 1:2000



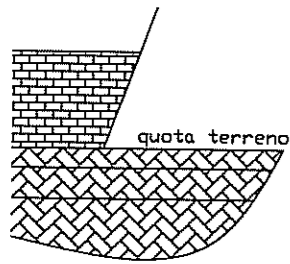
PLANIMETRIA



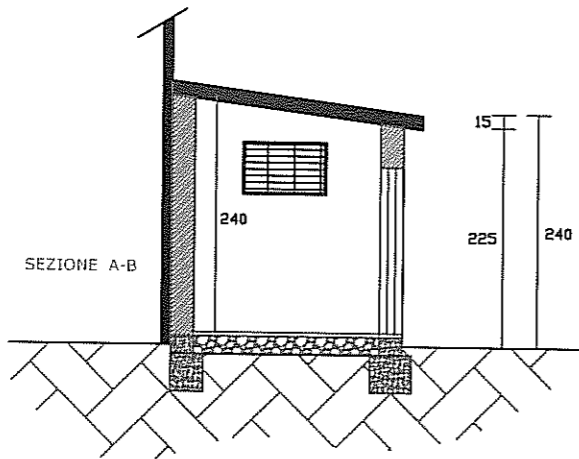
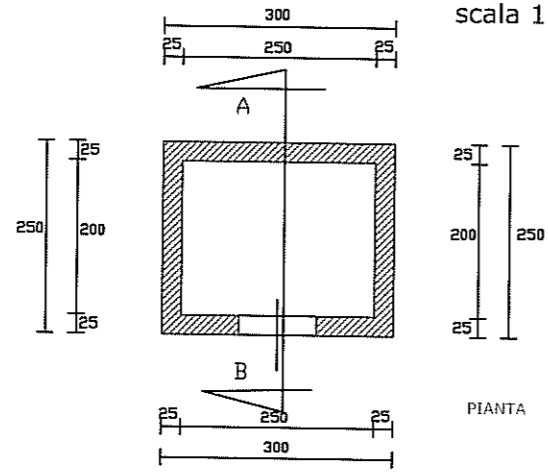
legenda

VE

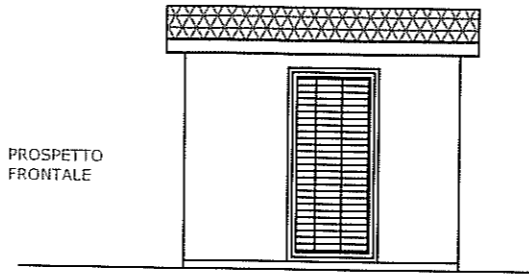
scala 1.20



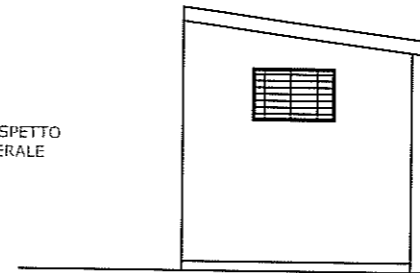
PARTICOLARE LOCALE POMPE scala 1.20



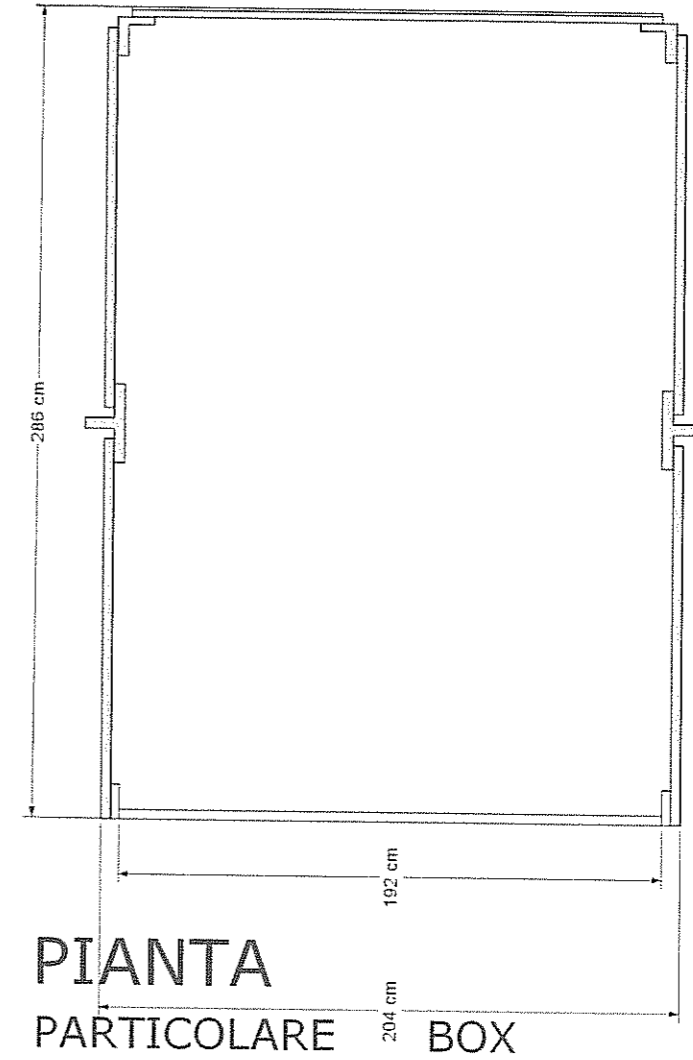
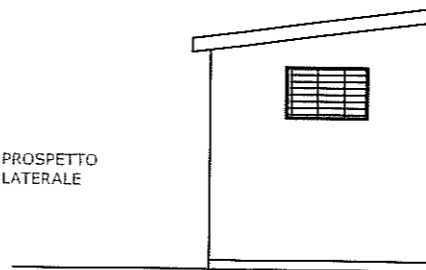
PROSPETTO FRONTALE



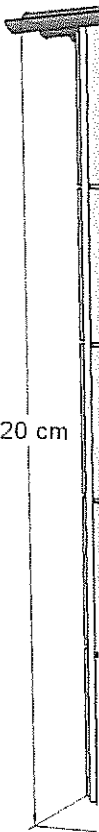
PROSPETTO LATERALE

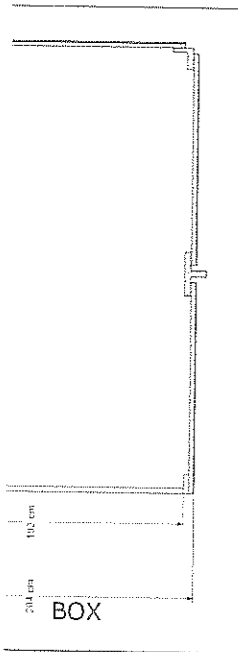


PROSPETTO LATERALE

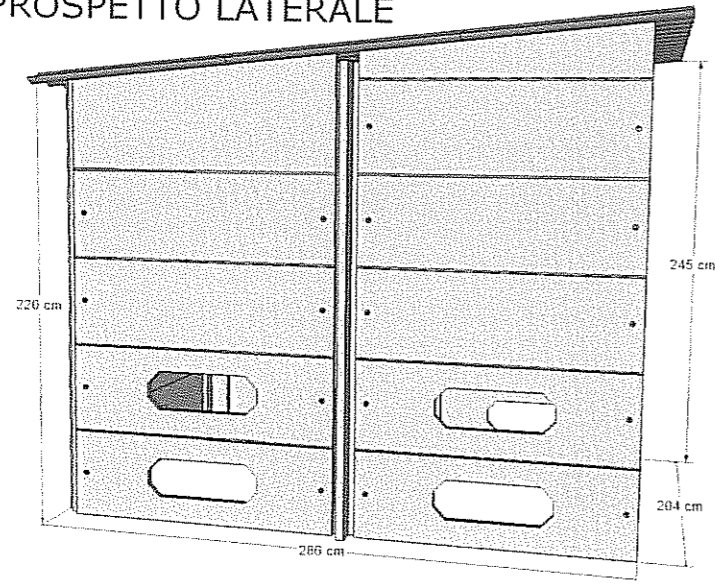


PROS

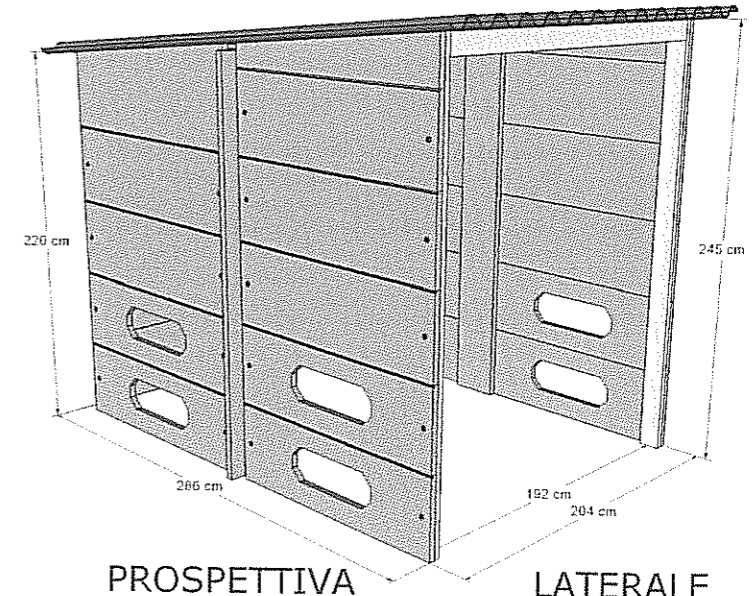
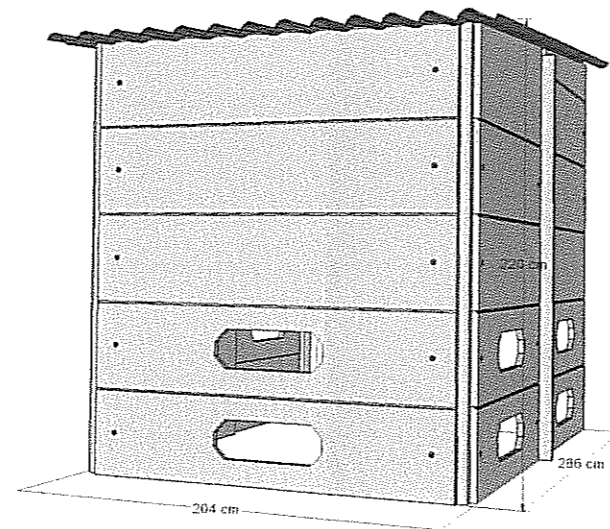




PROSPETTO LATERALE



PROSPETTIVA POSTERIORE



PROSPETTIVA

LATERALE

SITUAZIONE IN P
SUP

LOCALE GRUPPO APT



BOX BOMBOLE

